

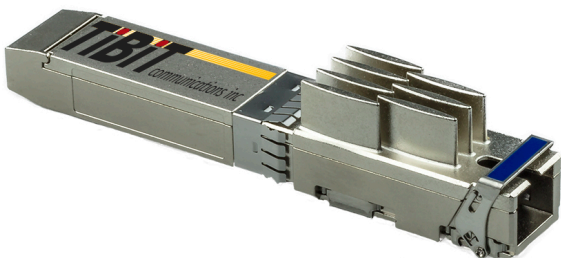
Product Brief Tibit MicroPlug™ OLT

Virtualizing Networks



FEATURES

- World's only Pluggable OLT
- SFP+ 10G Optical Transceiver with embedded Universal Ethernet-to-PON MAC Bridge
- Software Configurable, Symmetric 10G/10G Rates for XGS-PON or 10G EPON Protocols
- In XGS-PON Mode: Compliant With ITU-T G.9807.1 Specifications
- In EPON Mode: Compliant With IEEE802.3av, SIEPON, DPoE, and PON AES Specifications
- IEEE 802.1AE MACSec uplink encryption
- In-Band Management via Ethernet Link OAM (IEEE 802.3 Clause 57)
- Supports up to 128 subscribers and 2K services per OLT
- IEEE 1588v2 & SyncE Timing & Sync support
- XGS Class N2/EPON PR30+ Optical Power Budget
 - 1577nm Cooled EML DFB Laser
 - 1270nm APD/TIA Burst Receiver
- Integrated Digital Diagnostics And Monitoring (SFF-8472), and Burst RSSI
- Single Fiber SC/UPC Receptacle
- E-Temp Option with -40°C cold start-up
- Industry-unique modularity and scalability



Tibit Communications, Inc.

1465 N. McDowell Blvd.
Petaluma, CA 94954
Phone: +1 707 664-5906
www.tibitcom.com

OVERVIEW

Tibit's Universal 10G MicroPlug™ OLT is a configurable ITU-T XGS-PON or IEEE 10G EPON hot-pluggable SFP+ Optical Transceiver with a built-in 10G Ethernet-to-PON MAC bridge. It uses 10G XGS/EPON optics to enable 10G PON solutions at a fraction of the cost of fixed-format OLT chassis and pizza boxes.

This 10G OLT plugs into commercially-available Ethernet switches or other Ethernet-enabled networking equipment with SFP+ sockets, enabling them to become part of any 10G PON network.

The modularity and remote management capabilities of this SFP+ OLT make it ideally suited for virtualized PON management solutions and Software Defined Network (SDN) implementations such as the Open Networking Foundation's CORD and Broadband Forum OB-BAA.

The Tibit MicroPlug™ OLT enables service providers to quickly deploy high-bandwidth services in an agile, elastic, and scalable way.

This technology requires less space and power than any other OLT product on the market, including very high capacity deployments.

APPLICATIONS

- Central Office/Residential PON Access
- High-bandwidth Enterprise PON connectivity
- Ethernet switch PON extension/co-location
- Outside plant PON Access Bridge connectivity
- Cable MSO CCAP PON Connectivity
- Remote DOCSIS PHY
- Wireless Backhaul
- MDU-located PON Bridge

Part Number	Link Budget	Case Temp
TXM-MPOLT-01C	Class N2/PR30+	0...70°C
TXM-MPOLT-01E	Class N2/PR30+	-20...75°C